



A GUIDE TO YOUR TREATMENT



Information, tools, and support you may use throughout your treatment with WINREVAIR®.

When you start anything new, such as your treatment with WINREVAIR®, you may face uncertainty about what's coming next. The goal of this brochure is to give you information and tools that can provide support as you go forward with your treatment.

 **Visit winrevair.ca to learn more**

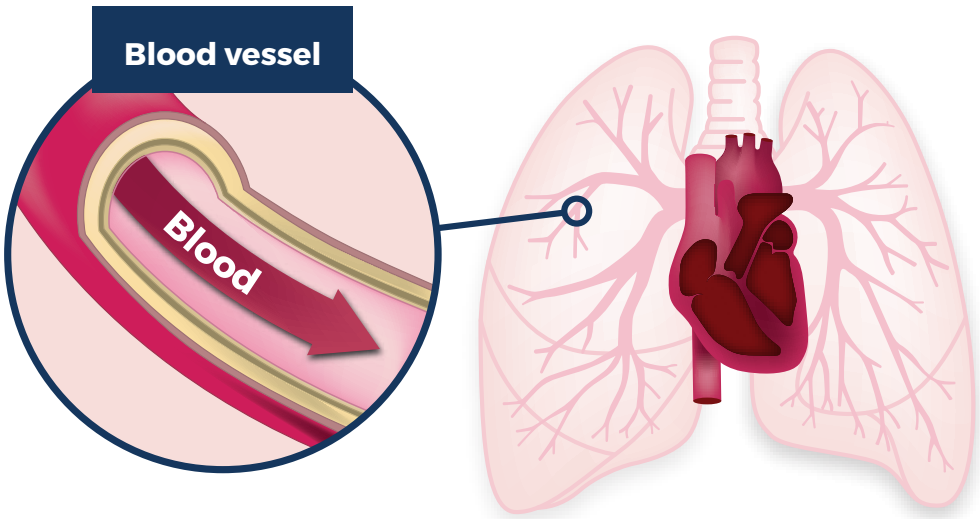

Pr WINREVAIR®
sotatercept for injection

WHAT IS WINREVAIR®?

WINREVAIR® is a prescription medicine to treat adults with pulmonary arterial hypertension (PAH). PAH is a type of high blood pressure in the arteries of your lungs.

HOW DOES WINREVAIR® WORK?

THE LUNGS



WINREVAIR® is an activin receptor type IIA-Fc (ActRIIA-Fc) fusion protein that works to lower the blood pressure in your lung arteries.

Activin is a molecule involved in PAH and it is found in the arteries of the lung.

HOW TO TAKE WINREVAIR®

Your WINREVAIR® dose is prescribed based on your body weight and blood tests. Your doctor will tell you how much WINREVAIR® to take and when to take it. Do not change your dose or stop taking WINREVAIR® without talking to your doctor. Do not take WINREVAIR® more often than your doctor tells you to. If you are not sure when to take WINREVAIR®, call your healthcare professional.

Your doctor will perform blood tests before and during your treatment with WINREVAIR® to monitor your response and find the best dose for you. Based on your response, your doctor may adjust, delay, or stop your treatment.



Injecting WINREVAIR® (kit)

You will take WINREVAIR® every 3 weeks as an injection just under your skin (subcutaneous). It is important that you take WINREVAIR® exactly as your doctor tells you to.

STEP 1 Store	Store your full WINREVAIR® injection kit in the refrigerator until ready to mix. Remove your kit from the refrigerator 15 minutes before you are ready to prepare the mixture.
STEP 2 Mix	Mix the powdered medicine into liquid form, following your Instructions for Use booklet.
STEP 3 Inject	Administer your prescribed dose in your stomach (abdomen) at least 2 inches away from the belly button, or upper thigh, just under the skin (subcutaneously). You should inject WINREVAIR® right away after mixing the medicine powder with the sterile water, but no later than 4 hours after mixing.
STEP 4 Dispose	Dispose of the used items in a sharps container.

Additional information

Self-injection is not appropriate for everyone. If your care team has agreed that you are eligible for self-injection, the above are the steps you will follow.

There are several steps involved in self-injection, which have not been detailed in full here. Please read the separate **Instructions for Use** booklet that comes with your kit each time you prepare and inject your dose.

Receiving WINREVAIR® (vial)

The **single-use vial** representation of WINREVAIR® is intended to be administered by a healthcare professional. You will be given WINREVAIR® every 3 weeks as an injection just under your skin (subcutaneous) in the stomach (abdomen) at least 2 inches away from the belly button, upper thigh, or upper arm.



For full instructions, go to winrevair.ca or scan this QR code to watch a video showing how to prepare WINREVAIR® for self-injection

To learn more about how WINREVAIR® works, talk to your doctor.

POSSIBLE SIDE EFFECTS

What are the possible side effects from using WINREVAIR®?

WINREVAIR® may cause side effects, but not everyone will experience them. It is important for you to be aware of them so that you can tell your doctor if needed.

These are not all the possible side effects you may have when taking WINREVAIR®. If you experience any side effects not listed here, tell your doctor.

The most common side effects of WINREVAIR® are:

- Nose bleeds (epistaxis)
- Headache
- Telangiectasia (also called spider veins or tiny blood vessels that look like pink or red lines on the skin)
- Diarrhea

In case of the following serious side effects, talk to your doctor.

	Symptom	What to do
Common	<p>Serious bleeding: Persistent headache, nausea, weakness, black or tarry stool, blood in your stool, bright red blood from vomiting or coughing, persistent abdominal cramps, severe back pain, or abnormally heavy menstrual bleeding</p> <p>These are more likely to happen if you take WINREVAIR® with certain medicines. Your doctor will tell you how to recognize them.</p>	Call your doctor.
Rare	<p>Erythrocytosis: A high level of hemoglobin (a protein in red blood cells that carries oxygen).</p> <p>This can raise the chance of a blood clot forming that can block a blood vessel.</p>	Call your doctor. Your healthcare professional will do blood tests to check your hemoglobin levels before starting and regularly during treatment with WINREVAIR®.
	<p>Severe thrombocytopenia: A low number of platelets (blood cells that help blood clot).</p> <p>This may cause easy bruising, continued bleeding from cuts, and nosebleeds.</p>	Call your doctor. Your healthcare professional will do blood tests to check your platelet level before starting and regularly during treatment with WINREVAIR®.

To help avoid side effects and ensure proper use, talk to your doctor before taking WINREVAIR®.

Talk about any health conditions you may have, including if you:

- Have or have had any medical conditions, and about any allergies.
- Are pregnant or if you are planning to get pregnant. WINREVAIR® may harm your unborn baby.
 - Your doctor should do a pregnancy test before you start taking WINREVAIR®.
 - You should use effective birth control when taking WINREVAIR®.
 - You should continue using effective birth control for at least 4 months after your last dose if you stop taking WINREVAIR®. Ask your doctor about birth control methods that would work well for you.
- Become pregnant or think you may be pregnant while taking WINREVAIR®.
- Are breastfeeding or plan to breastfeed. It is not known if WINREVAIR® passes into breast milk.
 - Do not breastfeed while taking WINREVAIR®.
 - Do not breastfeed for at least 4 months after your last dose if you stop taking WINREVAIR®. Talk to your doctor about the best way to feed your baby.

Other warnings you should know about:

Fertility

- WINREVAIR® may decrease female and male fertility.

Children

- It is not known if WINREVAIR® is safe and effective in children under 18 years of age.

Tell your doctor about all the medicines you take, including any drugs, vitamins, minerals, natural supplements or alternative medicines. It is unknown if WINREVAIR® interacts with other medicines or supplements.



If you have a troublesome symptom or side effect that is not listed here or becomes bad enough to interfere with your daily activities, tell your doctor.

FREQUENTLY ASKED QUESTIONS

Here you may find some answers to common questions you may have about WINREVAIR®. Talk to your doctor about your PAH and any other questions you may have about WINREVAIR®.

Please see the patient information leaflet for WINREVAIR® for additional information.



What should I do if I am not sure I administered my prescription dose correctly?
Call your doctor if you are not sure that you have taken your WINREVAIR® properly.

What should I do if my kit parts are damaged or if the solution is cloudy, discoloured, or has particles?
Do not use your kit. Call your pharmacy to tell them you need a new kit.

What should I do if my kit is expired?
Do not use your kit. Call your pharmacy to tell them you need a new kit.

What should I do if my medicine does not turn clear after mixing?
Do not use the medicine if you have swirled the medicine vial and let it stand for another 3 minutes, but your medicine vial remains cloudy or has clumps, powder, or particles. Discuss with your healthcare professional.

Can I use my kit that has been left out of the refrigerator?
If the unused injection kit has been out of the refrigerator for an extended period of time, contact your doctor or pharmacist before proceeding.

Do I need to use mixed medicine right away?
It is recommended that you inject the medicine right away after mixing but no later than 4 hours after mixing. If it has been more than 4 hours, throw away the unused mixed medicine.

How do I store WINREVAIR®?
Store WINREVAIR® in the refrigerator at 2°C to 8°C. Do not freeze. Store in the original container to help protect from light. Contact your doctor or pharmacist if the unused injection kit has been out of the refrigerator for an extended period of time. After you mix the medicine powder with the sterile water (provided in the kit), it is recommended that you inject it right away. Keep out of reach and sight of children.

What do I do if I self-inject WINREVAIR® and I miss a dose?
If you miss your prescribed dose of WINREVAIR®, take it within 3 days and follow your original schedule for your next dose. If not taken within 3 days, call your doctor for guidance.

What if I have taken more than my prescribed dose of WINREVAIR®?
If you think you, or a person you are caring for, have taken too much WINREVAIR®, contact a doctor, hospital emergency department, or regional poison control centre immediately, even if there are no symptoms.

Find more answers to your questions by visiting winrevair.ca

FIND SUPPORT WITH OTHER CANADIANS LIVING WITH PAH

Scan or go to <https://phacanada.ca> to visit the **Pulmonary Hypertension Association of Canada** for resources, support, and the latest information on PAH.



Scan or go to <https://www.htapquebec.ca> to visit the **Fondation Hypertension artérielle pulmonaire du Québec (HTAPQ)** to access support services, educational materials, and patient communities.



Need additional support?

Contact a representative from Merck Care™ INTEGRATE Patient Support Program by calling 1-888-959-3947 Monday to Friday, 9 AM to 5 PM (ET), via email (info@merckcareintegrate.com), or by fax (1-877-658-2135).

Notes

